

Line	Survey	Dist.
1	1878	32.24
2	1878	32.24
3	1878	32.24
4	1878	32.24
5	1878	32.24

Particulars

No.	Particulars	Value	Remarks
1	100' x 100'	1.00	
2	100' x 100'	1.00	
3	100' x 100'	1.00	
4	100' x 100'	1.00	
5	100' x 100'	1.00	

Date of last sessions 21, 4, 10, 10, 20, 27, 28
 Date of transmission of plans to 12, 6, 10
 Examined by *Chas. W. Watt* Chartered by R. 18, 1878
 Under 1788 Act Passed for payment of 1/100
 Sales Register Vol. 100, Fol. 605, Part 1, 2, 10
 Scale 1/100 Chas to an Inch.

Reference to Corners

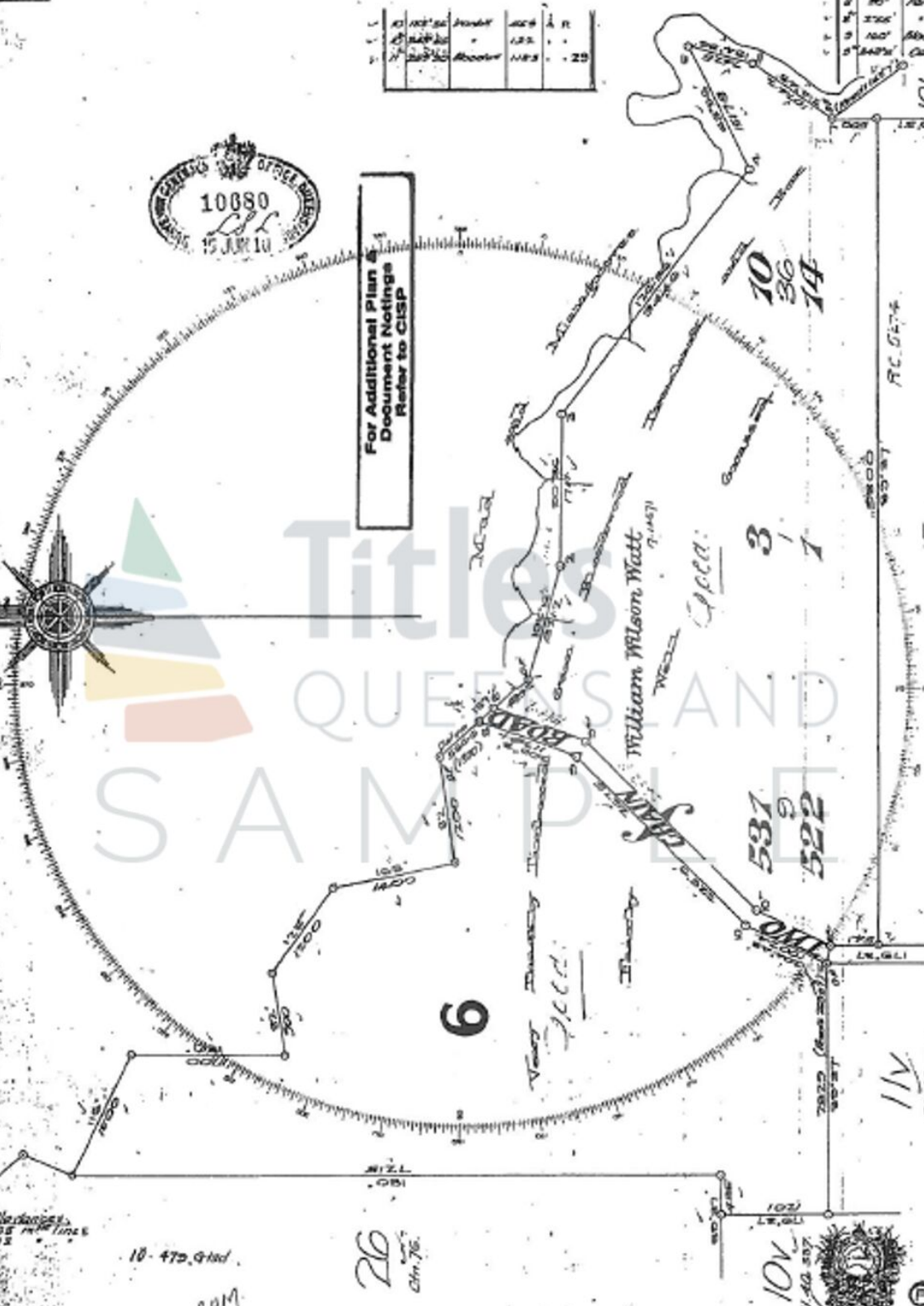
Ordering	From	Dist. Marks
1	1878	32.24
2	1878	32.24
3	1878	32.24
4	1878	32.24
5	1878	32.24

No.	Particulars	Value	Remarks
1	100' x 100'	1.00	
2	100' x 100'	1.00	
3	100' x 100'	1.00	
4	100' x 100'	1.00	
5	100' x 100'	1.00	



For Additional Plan & Document Notings Refer to CISP

Chas. W. Watt



CTN 128

Additional alterations on 1878 lines
 10-475, 476
 CAM

26
 Chas. W. Watt

10V
 Chas. W. Watt

Meridian Observations (Collapsing Shire)

(This form can also be adapted to stellar observations.)

No.	Year	Time	Temp.	Barom.	Wind	State	Observed	Reduced	Remarks
4330	U	24.4"	70.00"	Changous	Light	100' x 100'			True 218

NOTE: Observing stations are always at right angles.

PLAN OF

PORTION No. 6
 PARISH OF *Gympie*
 County of *March*
 Land Agents *Gympie*
 District of

CTN. 128.